

REVIEW

Open Access



In vitro fertilization (IVF) in mammals: epigenetic and developmental alterations. Scientific and bioethical implications for IVF in humans

Patricio Ventura-Juncá^{1,4*}, Isabel Irrarázaval¹, Augusto J. Rolle¹, Juan I. Gutiérrez¹, Ricardo D. Moreno^{2,3} and Manuel J. Santos^{1,3}

Abstract

The advent of in vitro fertilization (IVF) in animals and humans implies an extraordinary change in the environment where the beginning of a new organism takes place. In mammals fertilization occurs in the maternal oviduct, where there are unique conditions for guaranteeing the encounter of the gametes and the first stages of development of the embryo and thus its future. During this period a major epigenetic reprogramming takes place that is crucial for the normal fate of the embryo. This epigenetic reprogramming is very vulnerable to changes in environmental conditions such as the ones implied in IVF, including in vitro culture, nutrition, light, temperature, oxygen tension, embryo-maternal signaling, and the general absence of protection against foreign elements that could affect the stability of this process. The objective of this review is to update the impact of the various conditions inherent in the use of IVF on the epigenetic profile and outcomes of mammalian embryos, including superovulation, IVF technique, embryo culture and manipulation and absence of embryo-maternal signaling. It also covers the possible transgenerational inheritance of the epigenetic alterations associated with assisted reproductive technologies (ART), including its phenotypic consequences as is in the case of the large offspring syndrome (LOS). Finally, the important scientific and bioethical implications of the results found in animals are discussed in terms of the ART in humans.

Keywords: In vitro fertilization (IVF) in mammals, Epigenetics, Developmental alterations, Bioethical implications

Introduction

Human beings have the capacity to modify the environment and in this way to influence the development and survival of animal species and human beings. In this perspective, one topic that has had increasing importance is the impact that modifications of the environment have on early stages of mammalian development, which are particularly vulnerable to environmental changes.

In 1999 Barker et al. described the relation of maternal malnutrition during pregnancy and the threat of developing certain diseases in adulthood [1]. Greater risk of

coronary disease, hypertension, type two diabetes, metabolic syndrome and others have been described. This has been called the fetal origins of adult diseases or the Barker hypothesis [2, 3]. The transcendence of this discovery has been named with the initials DOHaD (Developmental Origins of Health and Disease) [4, 5]. Soon afterwards it was hypothesized that this effect could also occur in the pre-implantation embryo [6–8]. This was confirmed in several studies in rats that showed that malnutrition and hypoproteic diets administered only during the pre-implantation stage resulted in altered development such as low birth weight and abnormal blood pressure [9–12]. These findings were very important to stimulate research on the influence that assisted reproductive technologies (ART) could have on development

*Correspondence: pventura@puc.cl; pventura@uft.cl

⁴ Present Address: Bioethics Center, Universidad Finis Terrae, Pedro de Valdivia 1509, Providencia, Región Metropolitana, 7501015 Santiago, Chile
Full list of author information is available at the end of the article

and epigenetic reprogramming in the pre-implantation period, as these techniques imply great changes in the environment [13, 14]. The major concerns are related to the possible effects that ART may have on normal development in humans. It has been calculated that in developed countries 1–3 % of children are conceived using these techniques [15].

Fertilization of eutherian animals occurs in the maternal oviduct. This is the natural and unique environment to achieve the necessary requirements for embryo life and its early and late development. The embryo conceived in vitro is manipulated and cultured in very different conditions [11, 16].

Conrad Waddington highlighted many decades ago the relevance of the environment in development [17]. He emphasized the importance of studying the conditions that control development that mediate the interactions between genotype and phenotype. Genetics had discovered the laws of inheritance and had explained how different characters are transmitted from parents to offspring. But, Waddington underlined, that there wasn't much knowledge about the mechanisms of development. He named this process Epigenetics, which is now understood as the conditions that control the expression of genes that are highly influenced by environment. A more precise definition is: "The study of changes in gene function that are mitotically and/or meiotically heritable and that do not entail a change in DNA sequence" [18]. This concept has broadened biological research in order to understand how this process can be altered by the environment and thus influence normal development and impact the etiology, susceptibility and onset of adult diseases [19–24]. Epigenetics has demonstrated that normal development does not depend only on a healthy genome.

There is an important epigenetic reprogramming during gametogenesis and the preimplantational period of the embryo, especially in imprinted genes, defined by their parental origin [25, 26]. This period has a sensible window to environmental changes which can alter the process of reprogramming, and thereby affect survival and the early and late development of mammal embryos [27, 28]. The discovery of the epigenetic mechanisms that control gene expression, at a molecular level, has been very useful to understand and detect when there has been an alteration at this level [20, 29]. Some of the mechanisms known today are: cytosine-adenine methylation; histone modifications and the control that different microRNA has on gene expression [24, 29, 30]. In the mid-1990s Sasaki et al., and Tremblay et al. showed that rats produced in vitro carried imprinted gene alterations, especially in the H19 paternal gene [31, 32]. Today we have a huge amount of information, mostly derived from animals, about the alterations that can occur in embryos

produced in vitro because of the manipulation and artificial environmental conditions associated with these techniques [33].

It has been discovered that the following processes and techniques associated with in vitro fertilization (IVF) can alter the epigenetic reprogramming of gametes, embryos and normal mammal development [34] (Fig. 1).

1. Superovulation and in vitro maturation (IVM) of gametes.
2. Fertilization technique: ICSI vs IVF.
3. Embryo culture.
4. Embryo manipulation: pre-implantation genetic diagnosis and embryo transfer.
5. Maternal-embryo signaling during the pre-implantation period.

The aim of this review is to update the currently available information provided by animal studies exploring offspring alterations in the epigenetic profile, development, survival and phenotype associated with the artificial environment in which IVF is performed. We propose that this information has scientific and bioethical implications that must be considered in human IVF/ICSI.

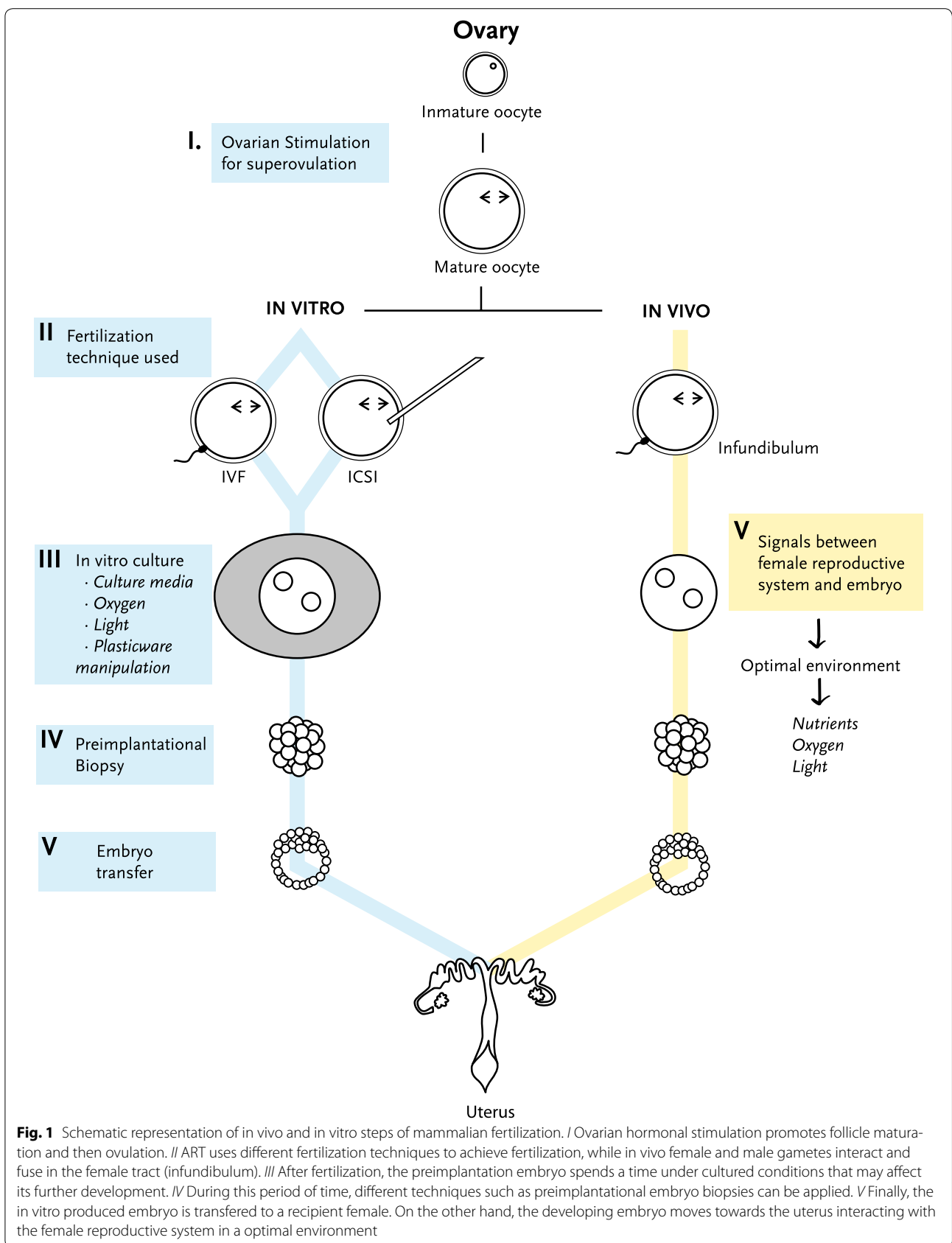
Superovulation and IVM of gametes

Superovulation

In women the ovary normally produces one unique egg in each cycle. To count on more than one egg to perform IVF, the superovulation helps make the process more productive. This technique consists of hormonal stimulation of the ovary with exogenous gonadotropins or similar substances, to produce a larger number of eggs per cycle. The eggs obtained in this mode are usually immature and require an in vitro time of maturation.

Over the last 10 years there has been a growing body of evidence showing the relationship of superovulation and epigenetic disorders on eggs and embryos, which are associated with developmental alterations in different mammal species [22, 27, 35]. The analysis of the genomic imprinting of eggs obtained from super-ovulation shows disorders in four imprinted genes: Peg1, Kcnq1ot1, Zac and H19 in comparison with eggs from natural ovulation [36–40]. Specifically, alterations in gene H19 have been demonstrated in many studies [41, 42]. The hormone dose used for this procedure seems to be important in the degree of methylation [39].

Studies on naturally conceived versus super ovulation-derived mice offspring demonstrated epigenetic alterations in the somatic tissue of the developing embryo [25]. One recent study demonstrated that epigenetic alterations associated with gonadotropins also correlate with less fetal and placental development, as well as a smaller



embryo throughout life [43]. Studies in mice suggest that ovary hyper-stimulation may affect embryo implantation [44].

This significant amount of information related to the deleterious effects of superovulation in normal gene expression, which impacts various issues necessary for embryo development [45, 46] has enhanced efforts to improve the superovulation protocols in animals to diminish its negative effects [47].

IVM of gametes

In vitro maturation of eggs has been associated with epigenetic alterations in addition to the effect of superovulation [48–50]. One study analyzed the DNA methylation status of the imprinted genes H19, Mest/Peg1 and Igf2R during in vitro maturation of mouse oocyte from pre-antral follicles [50]. The results show that when germinal vesicle oocyte after IVM are compared to those isolated from mice ovary, a loss of methylation at the Igf2R locus and Mest/Peg1 locus, and a gain of methylation at the H19 locus were found.

Similar results have been found in humans. In one of such studies, 20 metaphase II oocytes were analyzed, and 15 showed the normal unmethylated maternal pattern of H19 gene, while five originating from two different patients exhibited a methylated pattern [48].

It has been shown that the level of alteration depends on the time and the composition of culture media [39, 51–53].

Sperm culture has not been associated with epigenetic alterations, probably because epididymal sperm have the epigenetic reprogramming already completed, in contrast to egg maturation. The eventual epigenetic alterations that may be found in sperm have been associated with male infertility, as shown in mice [54, 55], swine [56] and humans [46, 57–59]. But a new challenge is presented when in animal and human ICSI is performed with immature sperm from the testes. Normal mice have been born with this technique [60]. After animal experiments, spermatozoa with different degrees of maturation have been used in humans with controversial results and low pregnancy rates. In vitro maturation of the sperm has also been tested. The in vitro culture of spermatids has also resulted in very poor outcome. Furthermore, if the sperm sample is maintained for an extended period of time there may be additional damage due to DNA fragmentation by nuclease release [61].

Egg epigenetic alterations associated with super-ovulation and in vitro culture can be maintained during the embryo and placental period [62, 63]. Authors recognize the difficulty in distinguishing the impact of super-ovulation versus the in vitro culture of eggs in these results.

In conclusion, there is evidence that superovulation as well as in vitro egg culture in different animal species produces epigenetic alterations in the egg and embryo, and that this could affect the outcome of the pregnancy.

Technique of fertilization: ICSI vs IVF

There is evidence showing that the kind of IVF technique used can alter the epigenetic reprogramming and eventually development [64]. Although in regular IVF there is a selection of gametes and embryos of better quality, at present the prevalent and more economically efficient technique used in humans, is ICSI.

Intra-cytoplasmic sperm injection (ICSI)

ICSI was introduced in 1992 with great success but without previous experimental testing. Animal models were considered unsuitable. This technique bypasses several physiological events: natural selection of the fertilizing sperm, sperm capacitation, acrosomic reaction and membrane fusion [65, 66]. The use of this technique in humans is increasing, and is used even as a standard method in cases with normal sperm [67]. Data provided from 56 reporting countries shows an increase of ICSI in all initiated cycles from 60.6 % in 2004 to 66 % in 2006 (96 % in the Middle East; 81 % in Latin America; 70 % in the USA) [68, 69]. The effects of ICSI in humans have been studied for decades, including implantation percentage, live-born, incidence of malformation and developmental disorders [70–73]. But since research specifically on epigenetic effects implies embryo destruction, it has not been performed in humans because of ethical reasons, underlining the importance of animal studies.

Studies on different animal species produced by ICSI, have found an asynchronous remodeling of chromatin decondensation of the male pronucleus in primates, [71, 74] mice and cattle [75, 76]. Mice produced by ICSI compared to those produced by regular IVF have long-lasting transcriptome disturbances that are maintained until the neonatal stage. But up to date these alterations have not correlated with changes in the phenotypic profile or with transgenerational effects [77]. It has been described that mouse ICSI blastocysts, compared to in vivo conceived groups, have a reduction in the inner mass cells and significant differences in gene expression related to cell function, development and metabolism [78]. However, there is one study that did not find any differences in pre-implantation development in IVF or ICSI-produced mice compared to naturally conceived mice. It is thought that the difference in the studies may be explained because of the protocol used for ICSI in different species and the different strategies used to activate the egg and guarantee embryo development [79, 80].

It has been observed in mice offspring produced by ICSI that DNA fragmentation is associated with more abnormal development, health and behavior [61]. That is why there is so much effort in selecting non-fragmented DNA sperm to have better results [81]. Finally, descendants of male mice produced by ICSI have a higher rate of apoptosis in their testicle sperm, which requires further research [82].

In conclusion, in animals, ICSI is a low efficiency technology and shows more epigenetic alterations in comparison with regular IVF. Thus its application in animals in contrast of what happens in human, is less widespread [80].

Plasticware exposure

Notably, in 2003 Hunt et al. [83] communicated that exposing female mice to the xenoestrogen Bisphenol A (BPA), meiosis was altered and the rate of aneuploidy increase in these animals. Other studies demonstrated that exposing mice to BPA at the implantation period produced alterations in uterine morphology, estrogen and progesterone receptors and a lower implantation percentage [84–87]. This compound, among other xenoestrogens, is used in plastic and epoxy resin production [88]. IMV, IVF, ICSI or embryo culture implies exposition to plasticware and different studies have shown leakage of xenoestrogens, phthalates and from plastic polymers [89]. Since many *in vivo* and *in vitro* studies have shown that these compounds induce epigenetic alterations such as cytosine methylation and/or histone acetylation [90, 91], the exposure of gametes and embryos to plasticware during *in vitro* manipulation may induce epigenetic abnormalities which will may affect further development.

This information motivated research on whether there are significant levels of chemical compounds in IVF, especially BPA, which could affect the reproductive process. In this review we did not find any animal studies addressing this aspect. There is one study on women that did not find detectable BPA either in the culture medium or in the material used for IVF [92].

Embryo culture

Culture media and nutrition

In vitro culture (IVC) is probably the most relevant factor in the alterations of epigenetic reprogramming and development of animal embryos produced by IVF. This process is obligatory for IVF in contrast to some of the aspects mentioned above. Since the 1980s several studies have focused on investigating the effects of culture media in implantation, survival and development in different animal species, and the influence of several modifications in culture media such as the effects of proteins, the quality of the water and serum [93–99]. An increasing

number of studies confirm the influence of the culture medium in epigenetic preimplantation reprogramming and its impact on early embryo development [100–102].

Various effects associated with *in vitro* embryo culture can be observed early in the period from fertilization to implantation, such as:

- Low implantation rate.
- Disturbances in development speed, embryo quality and low trophoblast development.
- Abnormal preimplantation epigenetic reprogramming.

It has been shown that suboptimal culture media affect the percentage of implantation and the survival of embryos that could achieve implantation [103]. It has been shown in cattle and other species that there is an association between the early timing of the first cleavage and the probability of reaching the blastocyst stage. This fact is thought to be related with the suboptimal IVC [104–106]. Gutierrez-Adan et al. also detected differences in the mRNA pattern and development speed between embryos produced *in vitro* and *in vivo* [107]. They hypothesized that this epigenetic pattern could also be a good system for the selection of better quality embryos [108, 109].

The suboptimal environment of IVC media also affects the development of the trophoblast [108]. In mice, the dysregulation of the trophoblast epigenetic profile is maintained in the placenta, which seems to be more sensitive than the embryo to IVC [110, 111].

The results of different studies clearly demonstrate that the above alterations are associated with different degrees of variation in the epigenetic profile of the embryo and placenta, and have an impact on development [112]. Of special importance are the modifications of imprinted genes such as gene H19, which has been widely studied because of the different expressions it has depending on the culture medium [32, 33, 47, 113, 114].

Later, after implantation various deleterious effects have been found in the fetal period (implantation to birth). These include:

- Unbalanced fetal-placental development
- Abnormal fetal growth
- Abnormal metabolic responses

In some cases these changes have been associated with epigenetic modifications in the preimplantation period, especially of imprinted genes that play a key role in fetal and placental development as has been indicated [115]. Recent studies have confirmed these findings, showing cellular aberrations in placenta and fetus linked to

changes in gene expression, and the association of epigenetic aberrations with glucose metabolism and fetal growth in mice [116, 117]. This could affect the critical role that imprinted genes have in growth and development of the fetus and adult. Placental abnormalities and a greater mortality rate have also been reported [6].

The effect of impaired nutrition by maternal diet and in vitro culture is associated with developmental and metabolic alterations [118, 119]. Glucose metabolism is found to be altered in response to suboptimal culture conditions [120]. Specific alterations in glucose metabolism have also been found to be different between male and female embryos [116]. Abnormal development of skeletal muscle in bovine fetuses associated with a decreased expression of mRNA for myostatin has been reported in embryos produced in vitro in comparison with in vivo [121]. These anomalies are not detected in the implantation period, but in later stages of development.

Effects in the postnatal and adult period have been described in relation to IVC. For decades it has been described that ruminants born by IVF have an abnormally large birth size and visceromegaly [122, 123]. The first and most relevant alteration in phenotype in animals produced by IVF is the Large Offspring Syndrome (LOS) [124]. It is characterized by large size at birth, gross abnormalities in different organs, mainly visceromegaly, and metabolic alterations, especially in the glucose-insulin system, hypoglycemia, large tongue and umbilical hernia. All these features are similar to those found in the Beckwith–Wiedemann (BWS) syndrome in humans [125]. It is of special interest that the epigenetic alterations in the LOS are very similar to those found in the BWS [126–128]. The phenotypic similarity of these syndromes has helped to understand the epigenetic alteration of the BWS. In fact one study has found in LOS the absence of methylation at the KvDMR1 on the maternal allele, which is the major molecular signature of BWS [125]. The relation between epigenetic defects in LOS and BWS is very complex and needs more study. Studies with the LOS bovine model seem to be a good approach [125].

Embryo culture itself, independent of the effects of embryo transfer and of fetal growth, is associated with higher systolic blood pressure in 21-week old mice compared to in vivo controls. This study also found elevated activity of serum angiotensin and hepatic enzymes involved in the control of gluconeogenesis [129].

The addition of serum to the embryo culture medium has been associated with abnormal skeleton and organ development [121]. In vitro culture of rat embryos results with little but significant alterations related to anxiety, psychomotor activity and spatial memory. Investigators

propose that it is possible that a hippocampal alteration coupled to an impaired brain connection could alter memory development [130]. The type of culture medium also has a certain effect on the degree of these alterations in behavior [130]. Interestingly, a recent article reported that there is a synergistic effect of IVC with the type of diet given prenatally and postnatally in relation to its effect on anxiety and behavior. When these two parameters were evaluated separately there was no statistical difference. The authors point out that these findings highlight the importance of diet in women undergoing IVF [131].

The impact of culture medium on the outcome of ART is today undoubtedly a major constraint for these techniques in mammalian species. Thus special attention has been paid first to search for the best conditions of culture medium that can minimize its deleterious effects on epigenetic reprogramming and development [132–138]. And, secondly to research how to detect major alterations in the epigenetic profile of mammalian embryos produced by IVF [139–141]. In these latter aspects some authors have highlighted the importance of modifications in the expression of gene H19 that may be used as a sensor to the epigenetic embryo quality. Gene H19 has a central role in the control of imprinting genes [108]. Although there are differences between species, studies in animals may contribute to understand what happens in human [142, 143].

Oxygen concentration effects

Oxygen concentration in the oviduct where natural fertilization takes place in various mammalian species is between 1 and 9 %, which corresponds to an oxygen tension of around 11–60 mmHG [144–146]. In the beginning, human embryos produced by IVF were cultured at oxygen concentrations near 20 % (the same as the atmospheric level), very different than the in vivo condition [147, 148]. Studies in mice suggested that in vitro concentrations of oxygen similar to atmosphere levels could produce oxidative stress, mediated by free radicals of O₂, and affect embryogenesis [149–152]. Today we have a large amount of data showing that culture of embryos at elevated O₂ concentrations impairs blastocyst development, cell number and embryo metabolism in a variety of species [153–156]. Consistent with this, other studies have shown that culture at low oxygen pressure, around 5 %, help to produce better quality embryos in mice and cattle [157–160]. These deleterious effects were observed similarly during the cleavage and post-compaction phases [152]. Atmospheric oxygen concentration correlates with an increase of reactive oxygen species (ROS) compared to culture at 5 % oxygen [155]. ROS can alter protein synthesis and function and lipids, affecting cell membrane

stability and DNA damage [161]. Experiments adding antioxidants to culture have had some effect in reducing oxidative stress [162–165].

Human studies have also shown the correlation between O₂ pressures and IVF results [166, 167]. The Cochrane Data Base review confirmed the results of different studies in that the IVC of human embryos under conditions of low oxygen concentration improves the outcome of IVF and ICSI [168].

Embryo manipulation: pre-implantation genetic diagnosis and embryo transfer

Pre-implantation genetic diagnosis (PGD)

This procedure has the aim to study the genetic condition of the embryo before implantation [169]. One or two blastomeres are extracted and genetically analyzed to perform this procedure.

There are studies in different species, especially cattle, to evaluate the effect of PGD [170]. PGD is performed in the embryo-transfer industry of animals for efficient sexing of the preimplantation bovine embryo in order to control the sex of the offspring [171]. The best technique to perform the biopsy with minimum damage to the embryo has been evaluated in mice and bovines [172, 173]. To assess the consequences of PGD on embryo and placental development a comparison between groups of biopsied mice versus non-biopsied control groups has been performed [174–176]. It was demonstrated with time-lapse videos that biopsied embryos had a delay from one embryo stage to another. This may probably be due to later compaction and hatching from the zona pellucida [177, 178].

The effects of blastomer biopsy on steroid metabolism have also been investigated in mice. The results demonstrated that mice born after this procedure had a lower birth weight and a deregulation of steroid metabolism, which could have severe effects on posterior development [175].

Recent studies that investigated short and long term effects on mouse development found behavioral disorders with three different tests (Morris, water maze and pole climbing tests), compared to control groups. These disorders may occur because of altered epigenetic patterns in the mouse brain [179–181].

Embryo transfer

Rivera et al. in a meticulous study isolated the effects of embryo transfer on mice independently of other factors [182]. To do this they studied the methylation profile of ten imprinted genes (H19, Snrpn, Igf2, Kcnq1ot1, Cdkn1c, Kcnq1, Mknr3, Ascl2, Zim1, Peg3). A control group of embryos was conceived in vivo, not cultured or transferred. The female mice were sacrificed on day

9.5 and the embryos immediately collected for epigenetic study (unmanipulated group). A second group, conceived in vivo, was extracted at the blastocyst stage and transferred after an hour and a half without passing through in vitro culture. Concepti were collected and processed as described in the control group (embryo transfer group). A third group of embryos conceived in vivo was extracted at the two blastomere stage and cultured in vitro for 2 or 3 days until blastocyst and then transferred. Concepti were collected and processed as described in the control group (embryo culture + transfer). The epigenetic profile was studied in the three groups at nine and a half days. The embryo transfer group conceived in vivo that was transferred without going through culture had an aberrant expression of imprinted genes compared to the control group. Furthermore, in the embryo cultures + transfer, the effects of transfer was increased by culture as shown by the number of genes with aberrant allelic expression in embryonic and extraembryonic tissues. Alterations in the imprinting pattern were more significant in the placenta and yolk sac. Interestingly, they found that biallelic expression of *Kcnq1ot1* is related to loss of methylation on the maternal allele of the *KvDMR1* locus, which has been often associated with the human syndrome Beckwith–Wiedemann (BWS). These data shows that the sole embryo manipulation induces aberrant methylation gene pattern.

Maternal-embryo signaling during the pre-implantation period

In mammals, during the pre-implantation stage there is an exchange of different types of signals between the mother and the embryo that is thought to be critical for embryo development and implantation [183].

The presence of the embryo is recognized through these signals and a cross-talk takes place in the maternal tract which prepares an appropriate environment for implantation [184–186]. Thus, successful pregnancy in mammals involves synchronization between a receptive endometrium and a viable embryo [183, 187, 188]. This includes the modulation of the maternal immune system by the embryo [189, 190]. It is difficult to study these interactions in vivo; so much of what is known comes from in vitro models.

Absence of these signals in IVF raises the question of how much the technique can affect the results [191, 192]. In bovines it has been considered that the absence of these signals could be an important factor in the low efficiency of IVF [193]. Most recent reviews indicate that while there is considerable evidence of the influence of the oviduct on the quality of the developing embryo, there is little evidence of signals from the embryo to

the oviduct or the endometrium in this early stage [109, 194–197].

By contrast, strong evidence exists in relation to the importance of the embryo/endometrium interaction for normal implantation and pregnancy development [198, 199]. Nevertheless new research has shown that the embryo has an effect on the regulation of the epithelial cells of the oviduct [200].

All this information addresses the fact of the key role of the oviduct and maternal embryo cross-talk in embryo development and implantation [201]. New genomic technologies open the horizon for future research in this aspect of pre-implantation development [184].

Several modifications to the technique to overcome this problem have been proposed, such as the use of intermediate host oviducts for IVF embryos or adding synthetic conditions similar to the oviduct liquid [202–204]. One vital factor of this exchange of signals for pre-implantation development is TGF- β [205].

The specific role of the environmental factors that we have discussed above in the development and phenotype alterations are still not fully understood and difficult to isolate. The results of this artificial environment as a whole can be understood as the embryo being under different kinds of stress.

Trans-generational inheritance

A transgenerational effect occurs when the alterations pass through several generations. Evidence shows that epigenetic imprinting could be trans-generationally transmitted, despite the fact that during gametogenesis there is epigenetic reprogramming; but some molecular epigenetic elements not related to DNA sequence can resist this reprogramming [206]. This has been studied in animals [206]. Some facts related to this “resistance” to epigenetic reprogramming are described in the large offspring syndrome (LOS), such as organomegaly, which could pass to a second generation of individuals [16]. In cryopreserved rabbit embryos it was demonstrated that IVF could alter female reproduction in the next generation [207]. A recent study in mice showed that suboptimal IVC was associated with transgenerational alterations of glucose metabolism and hepatomegaly in the male offspring [208].

Some relevant elements in epigenetic mechanisms related to this process are the following:

- Some specific types of transposons, which are resistant to post-fertilization demethylation, such as the intracisternal-A particles (IAPs,) long-terminal repeat retrotransposons [209].
- De novo mutations in the DNA sequence of preimplantation embryos such as: numerical and structural

chromosomal abnormalities, point mutations, copy number variant (CNV) changes and duplications/deletions of microsatellites [210]

- Histone and chromatin modification [211]. Very recent data generated using *Caenorhabditis elegans* provide evidence for transmission of male gamete-mediated chromatin states through several rounds of replication, although it remains to be seen if a mechanism such as this is conserved in mammals [212].
- There are various cytoplasmic RNAs, such as nc(non-coding) RNAs which are transmitted by germ cells and are essential for post-fertilization development [213].

Discussion

The general objective of animal reproduction research is mainly to improve breeding, reproductive and productive efficiency in harmony with ecological challenges and animal health [214]. For this purpose one of the essential topics is to study the genetic and epigenetic mechanisms that control the preimplantation embryo development in vivo and in vitro.

From another perspective it must be pointed out that animal studies are important to evaluate the safety of new drugs and treatments as a previous bioethical step before clinical trials or medical innovations are performed in humans [215].

The focus of this review was to update the scientific information concerning the epigenetic alterations produced by the techniques of in vitro manipulation related to IVF in animals and their impact in phenotype, behavior and transgenerational transmission. A substantial amount of research available in animals shows convincingly that ART particularly IVE, produces significant epigenetic modifications, altering the expression of different genes, particularly of imprinted genes that have a major role in normal animal development. The consequences of these perturbations on the outcome of the offspring raises important questions not completely resolved that need to be addressed in order to clarify them. On one hand, it is quite difficult to isolate the degree of influence of the different factors implicated in the ART technique, such as: Superovulation and IVC of gametes, ICSI, embryo culture and absence of maternal embryo-signaling. The existing information centers especially on the importance of embryo culture, which is essential to perform IVF. On the other hand, effects on the phenotype have been reported consistently in many studies and the finding of trans-generational effects in some studies is an interesting and important datum which needs more investigation. The most significant and clear fact is the LOS which mimics the BWS in humans.

These results obtained in animals rise scientific and bioethical questions of how this evidence should be considered on the increasing use of ART in humans [49]. Studies in animals, when possible and necessary are a bioethical imperative to assess the safety of new treatments and procedures; these are made before introducing the new techniques in medical praxis [216, 217]. However this process, as it is performed today, did not occur with human IVF, due to reasons that are beyond the scope of this review.

Although extrapolation of the results of animal experiments to humans has limitations due to differences among mammalian species, they frequently provide light on what may also happen in humans and are definitively valuable to orient new research.

Ideally, similar experiments as the ones performed in animals, could be done in humans and answer crucial questions. But there are major ethical restrictions to perform such epigenetic studies in human embryos. Most likely, in the near future the analysis of the epigenetic profile of children and adults born by IVF will be possible and this will allow access to information and consequences of this technique that at present are mostly unknown. We agree with several authors in terms that it is mandatory to have better human epidemiological studies and that efforts should be made in order to have a clinical follow up during the whole life of every child born by IVF, because epigenetic alterations in the early stages of development can be expressed later in adult life as different pathologies [218]. This is similar as the discoveries of Barker and others in relation to the effects environmental conditions of intrauterine life in pediatric and adulthood diseases.

Finally, we think that a major concern is how to give parents who seek IVF techniques a clear, objective and prudent information of the evolving knowledge of the possible risks involved in this procedure [219].

Authors' contributions

PVJ conceived and design the study. Coordination of the group. Writing the first draft. II, AR participated in the search and resume of articles and evaluation of its quality and helped to draft the manuscript. JG participated in the search and resume of articles and evaluation of its quality. RM, MJS participated in the design of the study, in evaluating the molecular aspects involve in the revision and in reviewing the draft. All authors participated in the bioethical discussion. All authors read and approved the final manuscript.

Author details

¹ Bioethical Center and Department of Pediatrics, Faculty of Medicine, Pontificia Universidad Católica de Chile, Santiago, Chile. ² Department of Physiology, Faculty of Biological Sciences, Pontificia Universidad Católica de Chile, Santiago, Chile. ³ Department of Cellular and Molecular Biology, Faculty of Biological Sciences, Pontificia Universidad Católica de Chile, Santiago, Chile. ⁴ Present Address: Bioethics Center, Universidad Finis Terrae, Pedro de Valdivia 1509, Providencia, Región Metropolitana, 7501015 Santiago, Chile.

Acknowledgements

This work was partly financed by Grants VRI-PUC 1573/DPCC 2012; 4467/DPCC 2015; and 1150352 (to RDM).

Competing interests

The authors declare that they have no competing interests.

Received: 3 August 2015 Accepted: 30 November 2015

Published online: 18 December 2015

References

- Barker DJ. Fetal origins of cardiovascular disease. *Ann Med*. 1999;31(Suppl 1):3–6.
- Barker DJ, Thornburg KL. The obstetric origins of health for a lifetime. *Clin Obstet Gynecol*. 2013;56:511–9.
- Eriksson JG, et al. The developmental origins of chronic rheumatic heart disease. *Am J Hum Biol*. 2013;25:655–8.
- Gillman MW. Developmental origins of health and disease. *N Engl J Med*. 2005;353:1848–50.
- Gluckman PD, et al. Towards a new developmental synthesis: adaptive developmental plasticity and human disease. *Lancet*. 2009;373:1654–7.
- Fernandez-Gonzalez R, et al. Suboptimal in vitro culture conditions: an epigenetic origin of long-term health effects. *Mol Reprod Dev*. 2007;74:1149–56.
- Gluckman PD, et al. Effect of in utero and early-life conditions on adult health and disease. *N Engl J Med*. 2008;359:61–73.
- Johnson MH. The problematic in vitro embryo in the age of epigenetics. *Reprod Biomed Online*. 2005;10(Suppl 1):88–96.
- Gluckman PD, Hanson MA. Living with the past: evolution, development, and patterns of disease. *Science*. 2004;305:1733–6.
- Kwong WY, Osmond C, Fleming TP. Support for Barker hypothesis upheld in rat model of maternal undernutrition during the preimplantation period: application of integrated 'random effects' statistical model. *Reprod Biomed Online*. 2004;8:574–6.
- Kwong WY, et al. Maternal undernutrition during the preimplantation period of rat development causes blastocyst abnormalities and programming of postnatal hypertension. *Development*. 2000;127:4195–202.
- Walters E, Edwards R. Further thoughts regarding evidence offered in support of the 'Barker hypothesis'. *Reprod Biomed Online*. 2009;9:129–31.
- Khosla S, et al. Culture of preimplantation mouse embryos affects fetal development and the expression of imprinted genes. *Biol Reprod*. 2001;64:918–26.
- Schultz RM, Williams CJ. The science of ART. *Science*. 2002;296:2188–90.
- Manipalviratn S, DeCherney A, Segars J. Imprinting disorders and assisted reproductive technology. *Fertil Steril*. 2009;91:305–15.
- Calle A, et al. Long-term and transgenerational effects of in vitro culture on mouse embryos. *Theriogenology*. 2012;77:785–93.
- Waddington CH. Development as an epigenetic process. In: An introduction to modern genetics. 1939; London: Allen and Unwin.
- Wu C, Morris JR. Genes, genetics, and epigenetics: a correspondence. *Science*. 2001;293:1103–5.
- Bedregal P, et al. Contribution of epigenetics to understand human development. *Rev Med Chil*. 2010;138:366–72.
- Holliday R. Epigenetics comes of age in the twentyfirst century. *J Genet*. 2002;81:1–4.
- Hurd PJ. The era of epigenetics. *Brief Funct Genomics*. 2010;9:425–8.
- Osborne-Majnik A, Fu Q, Lane RH. Epigenetic mechanisms in fetal origins of health and disease. *Clin Obstet Gynecol*. 2013;56:622–32.
- Rattner BP. In this issue of epigenetics: special focus on environmental epigenetics. *Epigenetics*. 2011;6:789–90.
- Skinner MK. Environmental epigenomics and disease susceptibility. *EMBO Rep*. 2011;12:620–2.
- de Waal E, et al. Gonadotropin stimulation contributes to an increased incidence of epimutations in ICSI-derived mice. *Hum Mol Genet*. 2012;21:4460–72.
- Faulk C, Dolinoy DC. Timing is everything: the when and how of environmentally induced changes in the epigenome of animals. *Epigenetics*. 2011;6:791–7.
- Mak W, Weaver JR, Bartolomei MS. Is ART changing the epigenetic landscape of imprinting? *Anim Reprod*. 2010;7:168–76.

28. Macdonald WA. Epigenetic mechanisms of genomic imprinting: common themes in the regulation of imprinted regions in mammals, plants, and insects. *Genet Res Int*. 2012;2012:585024.
29. Inbar-Feigenberg M, et al. Basic concepts of epigenetics. *Fertil Steril*. 2013;99:607–15.
30. Kim JK, Samaranyake M, Pradhan S. Epigenetic mechanisms in mammals. *Cell Mol Life Sci*. 2009;66:596–612.
31. Sasaki H, et al. Temporal and spatial regulation of H19 imprinting in normal and uniparental mouse embryos. *Development*. 1995;121:4195–202.
32. Tremblay KD, et al. A paternal-specific methylation imprint marks the alleles of the mouse H19 gene. *Nat Genet*. 1995;9:407–13.
33. Lucas E. Epigenetic effects on the embryo as a result of periconceptual environment and assisted reproduction technology. *Reprod Biomed Online*. 2013;27:477–85.
34. McEvoy TG, Robinson JJ, Sinclair KD. Developmental consequences of embryo and cell manipulation in mice and farm animals. *Reproduction*. 2001;122:507–18.
35. Shi W, Haaf T. Aberrant methylation patterns at the two-cell stage as an indicator of early developmental failure. *Mol Reprod Dev*. 2002;63:329–34.
36. Arnaud P. Genomic imprinting in germ cells: imprints are under control. *Reproduction*. 2010;140:411–23.
37. Khoueiry R, et al. Dynamic CpG methylation of the KCNQ1OT1 gene during maturation of human oocytes. *J Med Genet*. 2008;45:583–8.
38. Laprise SL. Implications of epigenetics and genomic imprinting in assisted reproductive technologies. *Mol Reprod Dev*. 2009;76:1006–18.
39. Market-Velker BA, Fernandes AD, Mann MR. Side-by-side comparison of five commercial media systems in a mouse model: suboptimal in vitro culture interferes with imprint maintenance. *Biol Reprod*. 2010;83:938–50.
40. Sato A, et al. Aberrant DNA methylation of imprinted loci in superovulated oocytes. *Hum Reprod*. 2007;22:26–35.
41. Fauque P, et al. Assisted reproductive technology affects developmental kinetics, H19 imprinting control region methylation and H19 gene expression in individual mouse embryos. *BMC Dev Biol*. 2007;7:116.
42. Fortier AL, et al. Superovulation alters the expression of imprinted genes in the midgestation mouse placenta. *Hum Mol Genet*. 2008;17:1653–65.
43. Grazul-Bilska AT, et al. Placental development during early pregnancy in sheep: effects of embryo origin on fetal and placental growth and global methylation. *Theriogenology*. 2013;79:94–102.
44. Fossum GT, Davidson A, Paulson RJ. Ovarian hyperstimulation inhibits embryo implantation in the mouse. *J In Vitro Fert Embryo Transf*. 1989;6:7–10.
45. Barros CM, et al. Effect of superstimulatory treatments on the expression of genes related to ovulatory capacity, oocyte competence and embryo development in cattle. *Reprod Fertil Dev*. 2012;25:17–25.
46. Liang XW, et al. Superovulation induces defective methylation in line-1 retrotransposon elements in blastocyst. *Reprod Biol Endocrinol*. 2013;11:69.
47. Bo GA, Mapletoft RJ. Historical perspectives and recent research on superovulation in cattle. *Theriogenology*. 2014;81:38–48.
48. Borghol N, et al. Epigenetic status of the H19 locus in human oocytes following in vitro maturation. *Genomics*. 2006;87:417–26.
49. El Hajj N, Haaf T. Epigenetic disturbances in in vitro cultured gametes and embryos: implications for human assisted reproduction. *Fertil Steril*. 2013;99:632–41.
50. Kerjean A, et al. In vitro follicular growth affects oocyte imprinting establishment in mice. *Eur J Hum Genet*. 2003;11:493–6.
51. Anckaert E, et al. Effects of low methyl donor levels in culture medium during mouse follicle culture on oocyte imprinting establishment. *Biol Reprod*. 2010;83:377–86.
52. Russell DF, et al. The impact of oocyte maturation media on early bovine embryonic development. *Mol Reprod Dev*. 2006;73:1255–70.
53. van de Sandt JJ, Schroeder AC, Eppig JJ. Culture media for mouse oocyte maturation affect subsequent embryonic development. *Mol Reprod Dev*. 1990;25:164–71.
54. Marchal R, et al. DNA methylation in mouse gametogenesis. *Cytogenet Genome Res*. 2004;105:316–24.
55. Oakes CC, et al. Developmental acquisition of genome-wide DNA methylation occurs prior to meiosis in male germ cells. *Dev Biol*. 2007;307:368–79.
56. Congras A, et al. Sperm DNA methylation analysis in swine reveals conserved and species-specific methylation patterns and highlights an altered methylation at the GNAS locus in infertile boars. *Biol Reprod*. 2014;91:137.
57. Marques CJ, et al. Abnormal methylation of imprinted genes in human sperm is associated with oligozoospermia. *Mol Hum Reprod*. 2008;14:67–74.
58. Poplinski A, et al. Idiopathic male infertility is strongly associated with aberrant methylation of MEST and IGF2/H19 ICR1. *Int J Androl*. 2010;33:642–9.
59. Rousseaux S, et al. Establishment of male-specific epigenetic information. *Gene*. 2005;345:139–53.
60. Hasegawa H, et al. A novel culture system for mouse spermatid maturation which produces elongating spermatids capable of inducing calcium oscillation during fertilization and embryonic development. *J Assist Reprod Genet*. 2010;27:565–70.
61. Fernandez-Gonzalez R, et al. Long-term effects of mouse intracytoplasmic sperm injection with DNA-fragmented sperm on health and behavior of adult offspring. *Biol Reprod*. 2008;78:761–72.
62. Ertzeid G, Storeng R. The impact of ovarian stimulation on implantation and fetal development in mice. *Hum Reprod*. 2001;16:221–5.
63. Van der Auwera I, D'Hooghe T. Superovulation of female mice delays embryonic and fetal development. *Hum Reprod*. 2001;16:1237–43.
64. Piotrowska-Nitsche K, Chan AW. Effect of sperm entry on blastocyst development after in vitro fertilization and intracytoplasmic sperm injection—mouse model. *J Assist Reprod Genet*. 2013;30:81–9.
65. Ajduk A, Yamauchi Y, Ward MA. Sperm chromatin remodeling after intracytoplasmic sperm injection differs from that of in vitro fertilization. *Biol Reprod*. 2006;75:442–51.
66. Hewitson L, et al. Cellular and molecular events after in vitro fertilization and intracytoplasmic sperm injection. *Theriogenology*. 2000;53:95–104.
67. Nygren KG, Andersen AN. Assisted reproductive technology in Europe, 1999. Results generated from European registers by ESHRE. *Hum Reprod*. 2002;17:3260–74.
68. Mansour R, et al. International Committee for Monitoring Assisted Reproductive Technologies world report: assisted reproductive technology 2006. *Hum Reprod*. 2014;29:1536–51.
69. Sullivan EA, et al. International Committee for Monitoring Assisted Reproductive Technologies (ICMART) world report: assisted reproductive technology 2004. *Hum Reprod*. 2013;28:1375–90.
70. Bonduelle M, et al. Mental development of 201 ICSI children at 2 years of age. *Lancet*. 1998;351:1553.
71. Hansen M, et al. The risk of major birth defects after intracytoplasmic sperm injection and in vitro fertilization. *N Engl J Med*. 2002;346:725–30.
72. Lie RT, et al. Birth defects in children conceived by ICSI compared with children conceived by other IVF-methods; a meta-analysis. *Int J Epidemiol*. 2005;34:696–701.
73. Palermo GD, et al. Genetic and epigenetic characteristics of ICSI children. *Reprod Biomed Online*. 2008;17:820–33.
74. Hewitson L, et al. Fertilization and embryo development to blastocysts after intracytoplasmic sperm injection in the rhesus monkey. *Hum Reprod*. 1998;13:3449–55.
75. Dozortsev D, et al. Intracytoplasmic sperm injection in the rat. *Zygote*. 1998;6:143–7.
76. Goto K, et al. Fertilization by sperm injection in cattle. *Theriogenology*. 1990;33:238a.
77. Kohda T, et al. Intracytoplasmic sperm injection induces transcriptome perturbation without any transgenerational effect. *Biochem Biophys Res Commun*. 2011;410:282–8.
78. Giritharan G, et al. Effect of ICSI on gene expression and development of mouse preimplantation embryos. *Hum Reprod*. 2010;25:3012–24.
79. Bridges PJ, et al. Methodology matters: IVF versus ICSI and embryonic gene expression. *Reprod Biomed Online*. 2011;23:234–44.
80. Garcia-Rosello E, et al. Intracytoplasmic sperm injection in livestock species: an update. *Reprod Domest Anim*. 2009;44:143–51.
81. Parmegiani L, Cognigni GE, Filicori M. Sperm selection: effect on sperm DNA quality. *Adv Exp Med Biol*. 2014;791:151–72.

82. Yu Y, et al. Microinjection manipulation resulted in the increased apoptosis of spermatocytes in testes from intracytoplasmic sperm injection (ICSI) derived mice. *PLoS One*. 2011;6:e22172.
83. Hunt PA, et al. Bisphenol a exposure causes meiotic aneuploidy in the female mouse. *Curr Biol*. 2003;13:546–53.
84. Berger RG, Foster WG, deCatanzaro D. Bisphenol-A exposure during the period of blastocyst implantation alters uterine morphology and perturbs measures of estrogen and progesterone receptor expression in mice. *Reprod Toxicol*. 2010;30:393–400.
85. Berger RG, Hancock T, deCatanzaro D. Influence of oral and subcutaneous bisphenol-A on intrauterine implantation of fertilized ova in inseminated female mice. *Reprod Toxicol*. 2007;23:138–44.
86. Berger RG, Shaw J, deCatanzaro D. Impact of acute bisphenol-A exposure upon intrauterine implantation of fertilized ova and urinary levels of progesterone and 17beta-estradiol. *Reprod Toxicol*. 2008;26:94–9.
87. Varayoud J, et al. Neonatal exposure to bisphenol A alters rat uterine implantation-associated gene expression and reduces the number of implantation sites. *Endocrinology*. 2011;152:1101–11.
88. Lagos-Cabre R, Moreno RD. Contribution of environmental pollutants to male infertility: a working model of germ cell apoptosis induced by plasticizers. *Biol Res*. 2012;45:5–14.
89. Bittner GD, Yang CZ, Stoner MA. Estrogenic chemicals often leach from BPA-free plastic products that are replacements for BPA-containing polycarbonate products. *Environ Health*. 2014;13:41.
90. Grady R, Sathyanarayana S. An update on phthalates and male reproductive development and function. *Curr Urol Rep*. 2012;13:307–10.
91. Manikkam M, et al. Plastics derived endocrine disruptors (BPA, DEHP and DBP) induce epigenetic transgenerational inheritance of obesity, reproductive disease and sperm epimutations. *PLoS One*. 2013;8:e55387.
92. Mahalingaiah S, et al. Bisphenol A is not detectable in media or selected contact materials used in IVF. *Reprod Biomed Online*. 2012;25:608–11.
93. Allen RL, Bondioli KR, Wright RW Jr. The ability of fetal calf serum, new-born calf serum and normal steer serum to promote the in vitro development of bovine morulae. *Theriogenology*. 1982;18:185–9.
94. Betterbed B, Wright RW Jr. Development of one-cell ovine embryos in two culture media under two gas atmospheres. *Theriogenology*. 1985;23:547–53.
95. Caro CM, Trounson A. The effect of protein on preimplantation mouse embryo development in vitro. *J In Vitro Fert Embryo Transf*. 1984;1:183–7.
96. Dukelow WR, et al. Preimplantation development of the primate embryo after in vitro fertilization. *J Exp Zool*. 1983;228:215–21.
97. Fukuda A, et al. Influence of water quality on in vitro fertilization and embryo development for the mouse. *J In Vitro Fert Embryo Transf*. 1987;4:40–5.
98. Kruger TF, et al. The effect of serum supplementation on the cleavage of human embryos. *J In Vitro Fert Embryo Transf*. 1987;4:10–2.
99. Naz RK, et al. Factors influencing murine embryo bioassay: effects of proteins, aging of medium, and surgical glove coatings. *Fertil Steril*. 1986;46:914–9.
100. Fleming TP, et al. The embryo and its future. *Biol Reprod*. 2004;71:1046–54.
101. Lonergan P, Fair T. The ART of studying early embryo development: progress and challenges in ruminant embryo culture. *Theriogenology*. 2014;81:49–55.
102. Lonergan P, et al. Effect of culture environment on gene expression and developmental characteristics in IVF-derived embryos. *Theriogenology*. 2006;65:137–52.
103. Morgan HD, et al. Epigenetic reprogramming in mammals. *Hum Mol Genet*. 2005;14 Spec(1):R47–58.
104. Dinnyes A, et al. Timing of the first cleavage post-insemination affects cryosurvival of in vitro-produced bovine blastocysts. *Mol Reprod Dev*. 1999;53:318–24.
105. Lonergan P, et al. Effect of time interval from insemination to first cleavage on the developmental characteristics, sex ratio and pregnancy rate after transfer of bovine embryos. *J Reprod Fertil*. 1999;117:159–67.
106. Totey SM, et al. Differential cleavage and developmental rates and their correlation with cell numbers and sex ratios in buffalo embryos generated in vitro. *Theriogenology*. 1996;45:521–33.
107. Gutierrez-Adan A, et al. Effect of speed of development on mRNA expression pattern in early bovine embryos cultured in vivo or in vitro. *Mol Reprod Dev*. 2004;68:441–8.
108. Lonergan P, et al. Temporal sensitivity of bovine embryos to culture environment after fertilization and the implications for blastocyst quality. *Reproduction*. 2003;126:337–46.
109. Rizo D, et al. Consequences of bovine oocyte maturation, fertilization or early embryo development in vitro versus in vivo: implications for blastocyst yield and blastocyst quality. *Mol Reprod Dev*. 2002;61:234–48.
110. Fauque P, et al. In vitro fertilization and embryo culture strongly impact the placental transcriptome in the mouse model. *PLoS One*. 2010;5:e9218.
111. Fowden AL, et al. The placenta and intrauterine programming. *J Neuroendocrinol*. 2008;20:439–50.
112. Beaujean N. Epigenetics, embryo quality and developmental potential. *Reprod Fertil Dev*. 2014;27:53–62.
113. Doherty AS, et al. Differential effects of culture on imprinted H19 expression in the preimplantation mouse embryo. *Biol Reprod*. 2000;62:1526–35.
114. Li T, et al. IVF results in de novo DNA methylation and histone methylation at an Igf2-H19 imprinting epigenetic switch. *Mol Hum Reprod*. 2005;11:631–40.
115. Mann MR, et al. Selective loss of imprinting in the placenta following preimplantation development in culture. *Development*. 2004;131:3727–35.
116. Donjacour A, et al. In vitro fertilization affects growth and glucose metabolism in a sex-specific manner in an outbred mouse model. *Biol Reprod*. 2014;90:80.
117. Sui L, et al. Dynamic proteomic profiles of in vivo- and in vitro-produced mouse postimplantation extraembryonic tissues and placentas. *Biol Reprod*. 2014;91:155.
118. Chason RJ, et al. Environmental and epigenetic effects upon preimplantation embryo metabolism and development. *Trends Endocrinol Metab*. 2011;22:412–20.
119. Fleming TP, et al. Nutrition of females during the peri-conceptual period and effects on foetal programming and health of offspring. *Anim Reprod Sci*. 2012;130:193–7.
120. Chen M, et al. Altered glucose metabolism in mouse and humans conceived by IVF. *Diabetes*. 2014;63:189–98.
121. Crosier AE, et al. Development of skeletal muscle and expression of candidate genes in bovine fetuses from embryos produced in vivo or in vitro. *Biol Reprod*. 2002;67:401–8.
122. Behboodi E, et al. Birth of large calves that developed from in vitro-derived bovine embryos. *Theriogenology*. 1995;44:227–32.
123. Walker SK, Hartwich KM, Seamark RF. The production of unusually large offspring following embryo manipulation: concepts and challenges. *Theriogenology*. 1996;45:111–20.
124. Young LE, Sinclair KD, Wilmot I. Large offspring syndrome in cattle and sheep. *Rev Reprod*. 1998;3:155–63.
125. Chen Z, et al. Large offspring syndrome: a bovine model for the human loss-of-imprinting overgrowth syndrome Beckwith–Wiedemann. *Epigenetics*. 2013;8:591–601.
126. Farin PW, Piedrahita JA, Farin CE. Errors in development of fetuses and placentas from in vitro-produced bovine embryos. *Theriogenology*. 2006;65:178–91.
127. Hori N, et al. Aberrant CpG methylation of the imprinting control region KvDMR1 detected in assisted reproductive technology-produced calves and pathogenesis of large offspring syndrome. *Anim Reprod Sci*. 2010;122:303–12.
128. Young LE, et al. Epigenetic change in IGF2R is associated with fetal overgrowth after sheep embryo culture. *Nat Genet*. 2001;27:153–4.
129. Watkins AJ, et al. Mouse embryo culture induces changes in postnatal phenotype including raised systolic blood pressure. *Proc Natl Acad Sci USA*. 2007;104:5449–54.
130. Ecker DJ, et al. Long-term effects of culture of preimplantation mouse embryos on behavior. *Proc Natl Acad Sci USA*. 2004;101:1595–600.
131. Strata F, et al. Behavior and brain gene expression changes in mice exposed to preimplantation and prenatal stress. *Reprod Sci*. 2015;22:23–30.

132. Baldoceda-Baldeon LM, et al. Improvement of bovine in vitro embryo production by vitamin K(2) supplementation. *Reproduction*. 2014;148:489–97.
133. Cebrian-Serrano A, et al. Effect of the bovine oviductal fluid on in vitro fertilization, development and gene expression of in vitro-produced bovine blastocysts. *Reprod Domest Anim*. 2013;48:331–8.
134. Eswari S, Sai Kumar G, Sharma GT. Expression of mRNA encoding leukemia inhibitory factor (LIF) and its receptor (LIFRbeta) in buffalo preimplantation embryos produced in vitro: markers of successful embryo implantation. *Zygote*. 2013;21:203–13.
135. Fukuda A, et al. Effects of the supernatants of mixed lymphocyte cultures and decidual cell line cultures on mouse embryo development in vitro. *J In Vitro Fert Embryo Transf*. 1989;6:59–64.
136. Lloyd RE, et al. Effects of oviductal fluid on the development, quality, and gene expression of porcine blastocysts produced in vitro. *Reproduction*. 2009;137:679–87.
137. Moore K, Bondioli KR. Glycine and alanine supplementation of culture medium enhances development of in vitro matured and fertilized cattle embryos. *Biol Reprod*. 1993;48:833–40.
138. Wang F, et al. Melatonin improves the quality of in vitro produced (IVP) bovine embryos: implications for blastocyst development, cryotolerance, and modifications of relevant gene expression. *PLoS One*. 2014;9:e93641.
139. Bauer BK, et al. Transcriptional profiling by deep sequencing identifies differences in mRNA transcript abundance in in vivo-derived versus in vitro-cultured porcine blastocyst stage embryos. *Biol Reprod*. 2010;83:791–8.
140. Boulesteix C, Beaujean N. Fluorescent immunodetection of epigenetic modifications on preimplantation mouse embryos. *Methods Mol Biol*. 2015;1222:113–26.
141. Prather RS, et al. Genomic profiling to improve embryogenesis in the pig. *Anim Reprod Sci*. 2014;149:39–45.
142. Burgess DJ. Stem cells: epigenome reprogramming—of mice and men. *Nat Rev Genet*. 2014;15:571.
143. Chavez SL, et al. Comparison of epigenetic mediator expression and function in mouse and human embryonic blastomeres. *Hum Mol Genet*. 2014;23:4970–84.
144. Ar A, Mover H. Oxygen tensions in developing embryos: system inefficiency or system requirement? *Isr. J. Zool*. 1994;40:306–26.
145. Fischer B, Bavister BD. Oxygen tension in the oviduct and uterus of rhesus monkeys, hamsters and rabbits. *J Reprod Fertil*. 1993;99:673–9.
146. Ross RN, Graves CN. O₂ levels in the female rabbit reproductive tract. *J Anim Sci*. 1979;39:94–9.
147. Mehta RH. Growth of human preimplantation embryos in vitro. *Reprod Biomed Online*. 2001;2:113–9.
148. Pool TB. Recent advances in the production of viable human embryos in vitro. *Reprod Biomed Online*. 2002;4:294–302.
149. Karagenc L, et al. Impact of oxygen concentration on embryonic development of mouse zygotes. *Reprod Biomed Online*. 2004;9:409–17.
150. Kwon HC, et al. Effects of low oxygen condition on the generation of reactive oxygen species and the development in mouse embryos cultured in vitro. *J Obstet Gynaecol Res*. 1999;25:359–66.
151. Orsi NM, Leese HJ. Protection against reactive oxygen species during mouse preimplantation embryo development: role of EDTA, oxygen tension, catalase, superoxide dismutase and pyruvate. *Mol Reprod Dev*. 2001;59:44–53.
152. Umaoka Y, et al. Effects of oxygen toxicity on early development of mouse embryos. *Mol Reprod Dev*. 1992;31:28–33.
153. Adam AA, et al. Effects of oxygen tension in the gas atmosphere during in vitro maturation, in vitro fertilization and in vitro culture on the efficiency of in vitro production of mouse embryos. *Jpn J Vet Res*. 2004;52:77–84.
154. Bing YZ, et al. Effects of thioredoxin on the preimplantation development of bovine embryos. *Theriogenology*. 2003;59:863–73.
155. Kitagawa Y, et al. Effects of oxygen concentration and antioxidants on the in vitro developmental ability, production of reactive oxygen species (ROS), and DNA fragmentation in porcine embryos. *Theriogenology*. 2004;62:1186–97.
156. Wale PL, Gardner DK. Oxygen regulates amino acid turnover and carbohydrate uptake during the preimplantation period of mouse embryo development. *Biol Reprod*. 2012;87(24):1–8.
157. Arias ME, Sanchez R, Felmer R. Evaluation of different culture systems with low oxygen tension on the development, quality and oxidative stress-related genes of bovine embryos produced in vitro. *Zygote*. 2012;20:209–17.
158. Mantikou E, et al. Low oxygen concentrations for embryo culture in assisted reproductive technologies. *Hum Reprod Update*. 2013;19:209.
159. Wale PL, Gardner DK. Time-lapse analysis of mouse embryo development in oxygen gradients. *Reprod Biomed Online*. 2010;21:402–10.
160. Yuan YQ, et al. Influence of oxygen tension on apoptosis and hatching in bovine embryos cultured in vitro. *Theriogenology*. 2003;59:1585–96.
161. Liu L, Keefe DL. Cytoplasm mediates both development and oxidation-induced apoptotic cell death in mouse zygotes. *Biol Reprod*. 2000;62:1828–34.
162. Elamaran G, et al. Oxygen concentration and cysteamine supplementation during in vitro production of buffalo (*Bubalus bubalis*) embryos affect mRNA expression of BCL-2, BCL-XL, MCL-1, BAX and BID. *Reprod Domest Anim*. 2012;47:1027–36.
163. Kawamura Y, et al. Sirt3 protects in vitro-fertilized mouse preimplantation embryos against oxidative stress-induced p53-mediated developmental arrest. *J Clin Invest*. 2010;120:2817–28.
164. Rocha-Frigoni NA, et al. Effects of gaseous atmosphere and antioxidants on the development and cryotolerance of bovine embryos at different periods of in vitro culture. *Zygote*. 2015;23:159–68.
165. Yoon SB, et al. Developmental competence of bovine early embryos depends on the coupled response between oxidative and endoplasmic reticulum stress. *Biol Reprod*. 2014;90:104.
166. Catt JW, Henman M. Toxic effects of oxygen on human embryo development. *Hum Reprod*. 2000;15(Suppl 2):199–206.
167. Kovacic B, Vlaisavljevic V. Influence of atmospheric versus reduced oxygen concentration on development of human blastocysts in vitro: a prospective study on sibling oocytes. *Reprod Biomed Online*. 2008;17:229–36.
168. Bontekoe S, et al. Low oxygen concentrations for embryo culture in assisted reproductive technologies. *Cochrane Database Syst Rev*. 2012;7:CD008950.
169. Harper JC, Sengupta SB. Preimplantation genetic diagnosis: state of the art 2011. *Hum Genet*. 2012;131:175–86.
170. Polissen J, et al. Post-biopsy bovine embryo viability and whole genome amplification in preimplantation genetic diagnosis. *Fertil Steril*. 2010;93:783–8.
171. Park JH, et al. Rapid sexing of preimplantation bovine embryo using consecutive and multiplex polymerase chain reaction (PCR) with biopsied single blastomere. *Theriogenology*. 2001;55:1843–53.
172. Cenariu M, et al. Evaluation of bovine embryo biopsy techniques according to their ability to preserve embryo viability. *J Biomed Biotechnol*. 2012;2012:541384.
173. Takeuchi K, et al. Preclinical models for human pre-embryo biopsy and genetic diagnosis. I. Efficiency and normalcy of mouse pre-embryo development after different biopsy techniques. *Fertil Steril*. 1992;57:425–30.
174. Duncan FE, et al. The effect of blastomere biopsy on preimplantation mouse embryo development and global gene expression. *Fertil Steril*. 2009;91:1462–5.
175. Sugawara A, et al. Blastomere removal from cleavage-stage mouse embryos alters steroid metabolism during pregnancy. *Biol Reprod*. 2012;87(4):1–9.
176. Ugajin T, et al. Aberrant behavior of mouse embryo development after blastomere biopsy as observed through time-lapse cinematography. *Fertil Steril*. 2010;93:2723–8.
177. Kirkegaard K, Hindkjaer JJ, Ingerslev HJ. Human embryonic development after blastomere removal: a time-lapse analysis. *Hum Reprod*. 2012;27:97–105.
178. Terada Y, et al. Different embryonic development after blastomere biopsy for preimplantation genetic diagnosis, observed by time-lapse imaging. *Fertil Steril*. 2009;92:1470–1.
179. Sampino S, et al. Effects of blastomere biopsy on post-natal growth and behavior in mice. *Hum Reprod*. 2014;29:1875–83.
180. Wu Y, et al. Blastomere biopsy influences epigenetic reprogramming during early embryo development, which impacts neural development and function in resulting mice. *Cell Mol Life Sci*. 2014;71:1761–74.

181. Zhao HC, et al. Aberrant epigenetic modification in murine brain tissues of offspring from preimplantation genetic diagnosis blastomere biopsies. *Biol Reprod*. 2013;89:117.
182. Rivera RM, et al. Manipulations of mouse embryos prior to implantation result in aberrant expression of imprinted genes on day 9.5 of development. *Hum Mol Genet*. 2008;17:1–14.
183. Fazeli A. Maternal communication with gametes and embryos. *Theriogenology*. 2008;70:1182–7.
184. Alminana C, Fazeli A. Exploring the application of high-throughput genomics technologies in the field of maternal-embryo communication. *Theriogenology*. 2012;77:717–37.
185. Ulbrich SE, et al. In vitro systems for intercepting early embryo-maternal cross-talk in the bovine oviduct. *Theriogenology*. 2010;73:802–16.
186. Wolf E, et al. Embryo-maternal communication in bovine—strategies for deciphering a complex cross-talk. *Reprod Domest Anim*. 2003;38:276–89.
187. Robertson SA, et al. Peri-conceptual cytokines—setting the trajectory for embryo implantation, pregnancy and beyond. *Am J Reprod Immunol*. 2011;66(Suppl 1):2–10.
188. Rottmayer R, et al. A bovine oviduct epithelial cell suspension culture system suitable for studying embryo-maternal interactions: morphological and functional characterization. *Reproduction*. 2006;132:637–48.
189. Bauersachs S, Wolf E. Immune aspects of embryo-maternal cross-talk in the bovine uterus. *J Reprod Immunol*. 2013;97:20–6.
190. Walker CG, et al. Modulation of the maternal immune system by the pre-implantation embryo. *BMC Genomics*. 2010;11:474.
191. O'Neill C, Li Y, Jin XL. Survival signaling in the preimplantation embryo. *Theriogenology*. 2012;77:773–84.
192. Ostrup E, Hyttel P, Ostrup O. Embryo-maternal communication: signaling before and during placentation in cattle and pig. *Reprod Fertil Dev*. 2011;23:964–75.
193. Thatcher WW, et al. Uterine-conceptus interactions and reproductive failure in cattle. *Theriogenology*. 2001;56:1435–50.
194. Enright BP, et al. Culture of in vitro produced bovine zygotes in vitro vs in vivo: implications for early embryo development and quality. *Theriogenology*. 2000;54:659–73.
195. Lonergan P, Forde N. Maternal-embryo interaction leading up to the initiation of implantation of pregnancy in cattle. *Animal*. 2014;8(Suppl 1):64–9.
196. Maillou V, et al. Oviduct-embryo interactions in cattle: two-way traffic or a one-way street? *Biol Reprod*. 2015;92:144.
197. Rizos D, et al. Culture of bovine embryos in intermediate host oviducts with emphasis on the isolated mouse oviduct. *Theriogenology*. 2010;73:777–85.
198. Dorniak P, et al. Endometrial HSD11B1 and cortisol regeneration in the ovine uterus: effects of pregnancy, interferon tau, and prostaglandins. *Biol Reprod*. 2012;86:124.
199. Spencer TE, et al. Conceptus-derived prostaglandins regulate gene expression in the endometrium prior to pregnancy recognition in ruminants. *Reproduction*. 2013;146:377–87.
200. Schmaltz-Panneau B, et al. Early bovine embryos regulate oviduct epithelial cell gene expression during in vitro co-culture. *Anim Reprod Sci*. 2014;149:103–16.
201. Besenfelder U, Havlicek V, Brem G. Role of the oviduct in early embryo development. *Reprod Domest Anim*. 2012;47(Suppl 4):156–63.
202. Block J, et al. Use of insulin-like growth factor-I during embryo culture and treatment of recipients with gonadotropin-releasing hormone to increase pregnancy rates following the transfer of in vitro-produced embryos to heat-stressed, lactating cows. *J Anim Sci*. 2003;81:1590–602.
203. Block J, et al. Improving post-transfer survival of bovine embryos produced in vitro: actions of insulin-like growth factor-1, colony stimulating factor-2 and hyaluronan. *Theriogenology*. 2011;76:1602–9.
204. Sirisathien S, Hernandez-Fonseca HJ, Brackett BG. Influences of epidermal growth factor and insulin-like growth factor-I on bovine blastocyst development in vitro. *Anim Reprod Sci*. 2003;77:21–32.
205. Li G, et al. Genes of the transforming growth factor-beta signalling pathway are associated with pre-implantation embryonic development in cattle. *J Dairy Res*. 2012;79:310–7.
206. Mahsoudi B, Li A, O'Neill C. Assessment of the long-term and transgenerational consequences of perturbing preimplantation embryo development in mice. *Biol Reprod*. 2007;77:889–96.
207. Lavara R, et al. Long-term and transgenerational effects of cryopreservation on rabbit embryos. *Theriogenology*. 2014;81:988–92.
208. Calle A, et al. Male mice produced by in vitro culture have reduced fertility and transmit organomegaly and glucose intolerance to their male offspring. *Biol Reprod*. 2012;87:34.
209. Fernandez-Gonzalez R, et al. Histone modifications at the blastocyst Axin1 (Fu) locus mark the heritability of in vitro culture-induced epigenetic alterations in mice. *Biol Reprod*. 2010;83:720–7.
210. Delbes G, Hales BF, Robaire B. Toxicants and human sperm chromatin integrity. *Mol Hum Reprod*. 2010;16:14–22.
211. Szyf M. Nongenetic inheritance and transgenerational epigenetics. *Trends Mol Med*. 2015;21:134–44.
212. Gaydos LJ, Wang W, Strome S. Gene repression. H3K27me and PRC2 transmit a memory of repression across generations and during development. *Science*. 2014;345:1515–8.
213. Rassoulzadegan M, et al. RNA-mediated non-mendelian inheritance of an epigenetic change in the mouse. *Nature*. 2006;441:469–74.
214. Rowson LE. The second Hammond Memorial Lecture. The role of reproductive research in animal production. *J Reprod Fertil*. 1971;26:113–26.
215. Hackam DG, Redelmeier DA. Translation of research evidence from animals to humans. *JAMA*. 2006;296:1731–2.
216. Hyun I, et al. New ISSCR guidelines underscore major principles for responsible translational stem cell research. *Cell Stem Cell*. 2008;3:607–9.
217. Santos MJ, Ventura-Junca P. Bioethical aspects of basic research and medical applications of human stem cells. *Biol Res*. 2012;45:317–26.
218. Niemitz EL, Feinberg AP. Epigenetics and assisted reproductive technology: a call for investigation. *Am J Hum Genet*. 2004;74:599–609.
219. Hansen M, et al. Assisted reproductive technology and birth defects: a systematic review and meta-analysis. *Hum Reprod Update*. 2013;19:330–53.

Submit your next manuscript to BioMed Central and we will help you at every step:

- We accept pre-submission inquiries
- Our selector tool helps you to find the most relevant journal
- We provide round the clock customer support
- Convenient online submission
- Thorough peer review
- Inclusion in PubMed and all major indexing services
- Maximum visibility for your research

Submit your manuscript at
www.biomedcentral.com/submit

